

# Contribution Analysis Reflections in Practice

Dr Marsha Scott, Early Intervention Programme Manager  
Harriet Waugh, Early Intervention Research Officer



[westlothian.gov.uk](http://westlothian.gov.uk)



West Lothian  
Council



# Improvement Science

The effective use of tools such as PDSAs and run charts to effect system change through the use of small scale testing.

## West Lothian Approach

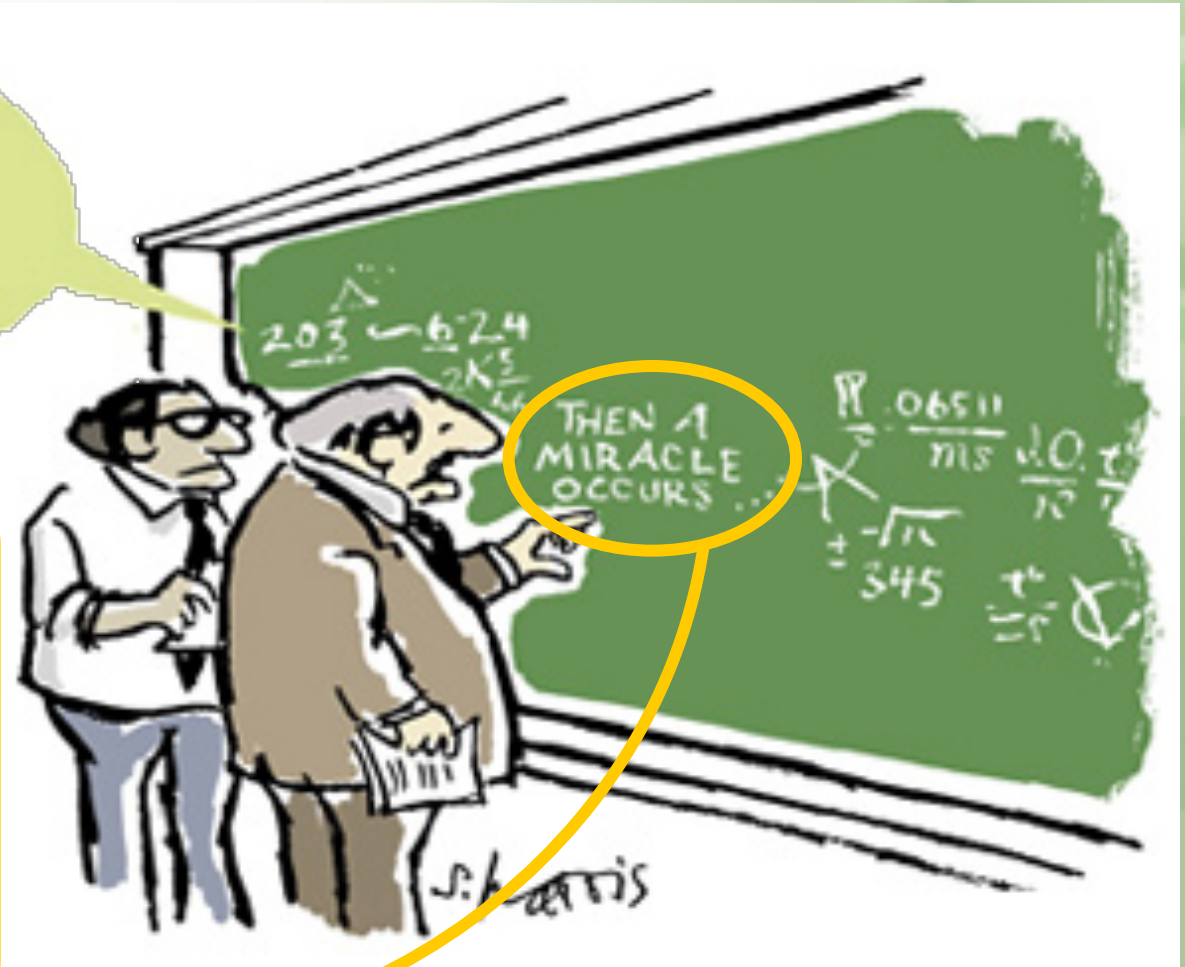
Pulling together both approaches to improve practice across early years and early intervention work in West Lothian

# Contribution Analysis

A structured framework to guide teams through implementation and evaluation



I THINK YOU SHOULD BE MORE SPECIFIC HERE IN STEP TWO

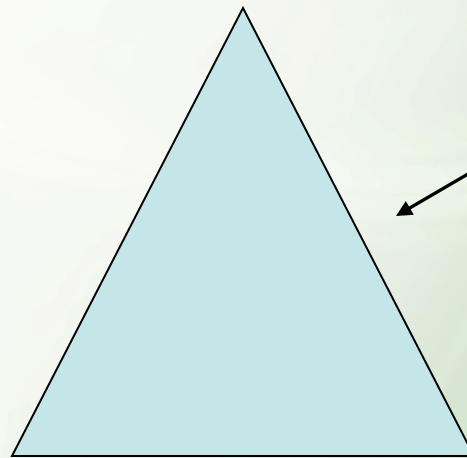


Contribution Analysis fills in the missing gaps by creating a transparent framework where every part of the process is clear, explicitly planned out and easily understood.

# Nurturing innovation

**Service Users**

**Innovation**



**Commissioners**

**Providers**

Innovation requires: transparency about decisions, money and outcomes, and a level playing field for providers

# The Most Important Part!



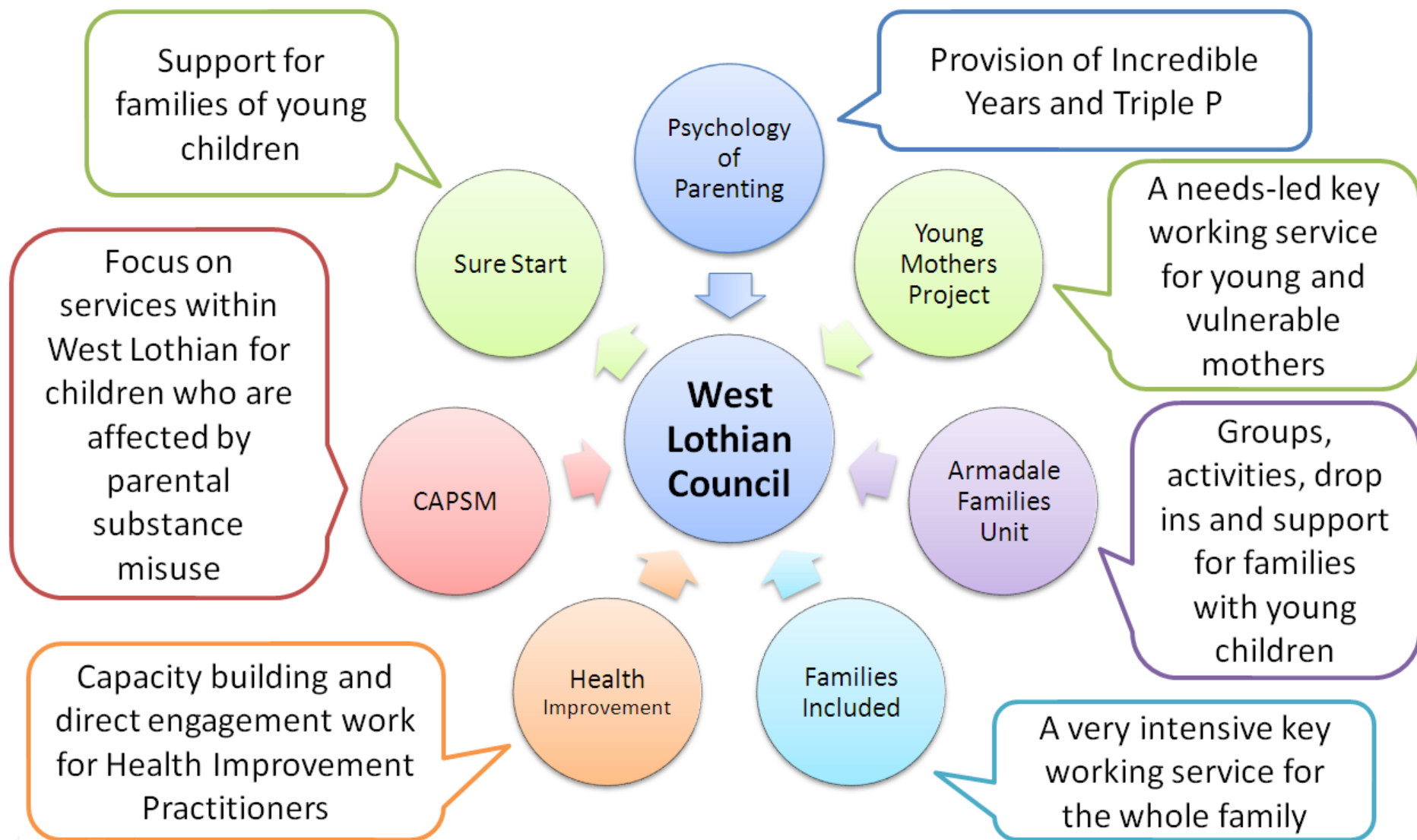
# Contribution Analysis Process

- **Scoping**- establish what will be done and in what context
- Create a **results chain**
- Generate **assumptions and risks**
- Use assumptions to determine what **indicators** are needed at each stage
- Implement **small scale testing** as a part of the evidence collection and to introduce changes aimed at minimising risks
- **Feedback into model**





# So far we have worked with a number of partners to support their improvement work



# Contribution Analysis Process

- **Scoping**- establish what will be done and in what context
- Create a **results chain**
- Generate **assumptions and risks**
- Use assumptions to determine what **indicators** are needed at each stage
- Implement **small scale testing** as a part of the evidence collection and to introduce changes aimed at minimising risks
- **Feedback into model**

# Changes in Process

- Outcome- Reduce stillbirth and infant mortality by 15% by 2015. smoking is key driver
- More pregnant women need to stop smoking to achieve outcome
- Specialist team has good outcomes for smoking cessation
- What does Contribution Analysis tell us about what might be going wrong?

# Focusing on systemic change

The First Law of Improvement:

“Every system is perfectly designed to achieve exactly the results it gets.”

Peter Senge, The Fifth Dimension